

KOREAN SENIOR CARE RESOURCE GUIDE

2019

LOS ANGELES EDITION

KOREAN AMERICAN HEALTH COALITION



Sun Bay Senior Club...

The New Option for Seniors

Koreatown's first premium all-day senior club



Full-Day Safety & Comfort

We are open Mon-Fri from 8am to 6pm with a highly-trained bilingual staff in a brand-new luxurious club.



Community of Friends

Members enjoy a close social circle. Our staff will encourage group activities and treat everyone like family.



Specialized Programming

Activities and classes focus on social, cognitive, and physical wellbeing including dancing, gardening, and social media classes.



Meals Included

We realize that many seniors consider food to be the most important factor in their lives. We offer various cuisines that are both nutritious and delicious!

SUN BAY
— SENIOR CLUB —

3060 W Olympic Blvd, Suite 120
Los Angeles, CA 90006

Call 213-349-2502 for a tour!
Learn more at sunbayseniors.com



Personalized Care

We offer medication reminders, meal monitoring, and incontinence assistance.

TABLE OF CONTENTS

I. Understanding Senior Care	5
• Overview	6
• Senior Care Options	6
• Summary	6
• Adult Day Program	7
• Community Based Adult Services	7
• Low-Income Senior Housing	8
• Independent Living	8
• Assisted Living	9
• Memory Care / Alzheimer's / Dementia	9
• Skilled Nursing	9
• Insurance	10
• Assisted Living Waiver	11
• Government Agencies	12
• Other Resources	12
II. Senior Care Directory	13
Adult Day Services	
• Adult Day Programs	14
Sun Bay Senior Club (Sun Bay 시니어 클럽)	15
• Community Based Adult Services	17
Better Life ADHC Center (밸리 보건센터)	18
Beverly ADHC Center (베버리 보건센터)	19
Day Light ADHC Center (데이라이트-피코양로 보건센터)	20
KHEIR ADHC (한인건강정보부속양로 보건센터)	21
Kingsley Place ADHC Center (킹슬리양로 보건센터)	22
LA CBAS Center (나성양로 보건센터)	23

Lomita ADHC Center (로미타양로 보건센터)	24
Pacific ADHC (퍼시픽양로 보건센터)	25
Silver Lake ADHC Center (실버레이크 보건센터)	26
Sherman Way ADHC (서먼웨이양로보건센터)	27
Spring ADHC (스프링 보건센터)	28
Western ADHC (웨스턴양로보건센터)	29
Wilshire ADHC (윌셔양로보건센터)	30
Housing	
• Assisted Living	31
Elim Silvertown (엘림실버타운)	32
Garden Silver Town (가든실버타운)	33
Mugungwha Silver Town (무궁화실버타운)	34
Sunny Hills Assisted Living (써니힐스양로호텔)	35
• Skilled Nursing	36
Alcott Rehabilitation Hospital (알콧양로병원)	37
Bell Convalescent Hospital (벨양로병원)	38
Burlington Convalescent Hospital (벌링턴양로병원)	39
Grand Park Convalescent Hospital (그랜드박양로병원)	40
Huntington Health Care Center (헌팅톤양로병원)	41
Mid-Wilshire Health Care Center (중앙양로병원)	42
Olympia Convalescent Hospital (올림피아양로병원)	43
Sunray Healthcare Center (썬레이 양로병원)	44
Virgil Convalescent Hospital (버질양로병원)	45
• Organizations	46

I

—

UNDERSTANDING
SENIOR CARE

OVERVIEW

The purpose of this resource guide is to list all the options for providing care to seniors of Korean heritage in Los Angeles. All the facilities in this resource guide had at least some staff with Korean language skills at the time of publication. Please note that although

all of the information have been verified as of the date of publication, some data are subject to change. Also note that this resource guide may not be comprehensive in identifying all options with Korean-speaking staff.

SENIOR CARE OPTIONS

SUMMARY

	Requires Medical Diagnosis	Accepts Medi-Cal	Operating Hours	Caregiving Staff	Meals (Breakfast, Lunch, Dinner)	Monthly Los Angeles Average	
Adult Day Services							
Adult Day Programs	No	No	M-F, 8AM-6PM	Yes	All	\$1587	(1)
CBAS	Yes	Yes	M-F, Mostly 8AM-2PM	Yes	Breakfast/Lunch	\$1647	(2)
Senior Housing							
Low Income Senior Housing	No	No	24/7	No	None	\$1209	(3)
Independent Living	No	No	24/7	No	Various	\$3953	(4)
Assisted Living	No	Varies	24/7	Yes	All	\$4485	(2)
Memory Care	Yes	Varies	24/7	Yes	All	\$4525	(5)
Skilled Nursing	Yes	Yes	24/7	Yes	All	\$7027 (semi-private); \$9277 (private)	(2)

(1) Sun Bay is the only ADP in LA with Korean-speaking staff

(2) Source: Genworth.com

(3) Source: Affordable Housing Online

(4) Source: SeniorHomes.com

(5) Source: Caring.com

ADULT DAY PROGRAM

Licensing: California Department of Social Services

An Adult Day Program (ADP) is a non-medical adult day services center licensed by the California Department of Social Services Community Care Licensing Division (DSS-CCLD) to provide care to elderly persons and other adults with physical and/or cognitive impairments who require personal care services, protective supervision or assistance in activities of daily living on less than a 24-hour basis. Services

are provided according to an individual plan of care in a structured, comprehensive program that offers therapeutic activities tailored to the individual's abilities; nutrition services; basic health monitoring; transportation coordination; and respite and support for families. ADP centers are private pay services and are not reimbursed by Medi-Cal.

COMMUNITY-BASED ADULT SERVICES

Licensing: California Department of Public Health

Administration: California Department of Aging

Effective April 1, 2012, a new program similar to Adult Day Health Care (ADHC) - Community-Based Adult Services (CBAS) - has begun under California's "Bridge to Reform" 1115 Medicaid waiver. Former ADHC participants who meet the more stringent CBAS eligibility standards will begin receiving CBAS services in approved CBAS centers. In addition to meeting Medi-Cal program and waiver requirements, CBAS providers must maintain an ADHC license. Currently, CBAS is a Medi-Cal managed care benefit. CBAS remains a Medi-Cal fee-for-service benefit for a small percentage of individuals who are exempt from Medi-Cal managed care enrollment.

Individuals also may pay "out-of-pocket" for services in licensed CBAS (formerly ADHC) centers. Third party payers such as long-term care insurance companies, Regional Centers or the Veterans Administration also may pay for services in licensed CBAS centers.

Under an interagency agreement, the CBAS Program is administered between the Department of Health Care Services (DHCS), the California Department of Public Health (CDPH), and the California Department of Aging (CDA). CDPH licenses ADHC centers and CDA certifies them for participation in the Medi-Cal Program.

The primary objectives of the program are to:

- Restore or maintain optimal capacity for self-care to frail elderly persons or adults with disabilities; and
- Delay or prevent inappropriate or personally undesirable institutionalization.

The Program stresses partnership with the participant, the family and/or caregiver, the primary care physician, and the community in working toward maintaining personal independence.

Each center has a multidisciplinary team of health professionals who conduct a comprehensive assessment of each potential participant to determine and plan services needed to meet the individual's specific health and social needs. Services provided at the center include the following: professional

nursing services; physical, occupational and speech therapies; mental health services; therapeutic activities; social services; personal care; hot meals and nutritional counseling; and transportation to and from the participant's residence.

LOW-INCOME SENIOR HOUSING

Licensing: Various

Each year, the Housing and Urban Development department calculates the threshold for low, very low, and extremely low incomes based on the median income for the area. For the 2017 fiscal year in Los Angeles, a two-person family needs to have an income of \$36,050 to be considered very low-income. The scale varies depending on the number of members in the family and income classification. At this level, you can qualify for affordable

housing assistance and Section 8 eligibility. It is important to note that while you might qualify for assistance, it can take a long time due to a lengthy waiting list. The Los Angeles Housing Authority oversees all public housing and Section 8 housing opportunities in the city. There are currently 14 public housing sites with a total of over 6,500 units that are used by low-income families.

INDEPENDENT LIVING

Licensing: None

Independent living communities cater to seniors who are very independent with few medical problems. Residents live in fully equipped private apartments. A variety of apartment sizes are available from studios to large two bedrooms. Fine dining services are offered with custom-designed meal

packages. Often, residents can choose to pay for a specified number of meals per day. Frequently, there are numerous social outings and events to choose from for entertainment. Offerings may include food, activities, laundry, and maintenance.

ASSISTED LIVING

Licensing: California Department of Social Services

Assisted Living communities are designed for seniors who are no longer able to live on their own safely but do not require the high level of care provided in a nursing home. Assistance with medications, activities of daily living, meals and housekeeping are routinely provided. Three meals per day are provided in a central dining room. Residents live in private apartments which frequently have a

limited kitchen area. Staff is available 24 hours per day for additional safety. Most assisted living communities provide licensed nursing services. Social activities and scheduled transportation are also available in most communities. A special unit for Alzheimer's residents is available in some, but not all communities.

MEMORY CARE / ALZHEIMER'S / DEMENTIA

Licensing: California Department of Social Services

Numerous senior housing options for people with dementia or Alzheimer's are available. With memory impaired, it is important to have 24-hour support and structured activities to ensure their safety and quality of life. If you need to consider a community, understand that Alzheimer's care is delivered in the assisted living setting, as well as in nursing homes and

occasionally in personal care homes. Generally, the residents live in semi-private apartments and have structured activities delivered by trained staff members. Most of these living environments have secured or locked areas to ensure no one wanders off. Many times, within the secured areas, residents have access to outdoor walking paths or gardens.

SKILLED NURSING

Licensing: California Department of Public Health

Skilled Nursing Facilities or nursing homes provide around-the-clock skilled nursing care for the frail elderly who require a high level of medical care and assistance. Twenty-four hour skilled nursing services are available from licensed nurses. Many nursing homes now provide short-term rehabilitative stays for those recovering from an injury, illness or

surgery. Long-term care residents generally have high care needs and complex medical conditions that require routine skilled nursing services. Residents typically share a room and are served meals in a central dining area unless they are too ill to participate. Activities are also available. Some facilities have a separate unit for Alzheimer's residents.

INSURANCE

Most health insurance policies do not cover costs associated with private pay senior services. Long-term care (LTC) insurance, however, is available but not as widely used.

LTC insurance covers care generally not covered by health insurance, Medicare, or Medicaid. Individuals who require long-term care are generally not sick in the traditional sense, but instead, are unable to perform two of the six activities of daily living (ADLs) such as dressing, bathing, eating, toileting, continence, transferring (getting in and out of a bed or chair), and walking.

Types of policies: ⁽¹⁾

Private LTC insurance is growing in popularity in the United States. Premiums, however, have risen dramatically in recent years even for existing policy holders. Coverage costs can be expensive, when consumers wait until retirement age to purchase LTC coverage.

As they relate to U.S. policies, two types of LTC policies offered are:

- **Traditional** policies are the most common policies offered. Traditional policy premiums, like automobile insurance premiums, are paid on a continual basis. If unused, no premiums are returned. However, if the policy has a “return of premium” rider, a death benefit will be paid to a beneficiary if the insured dies at a time when benefits received under the policy are less than the premiums paid to the insurer. The amount of the benefit is equal to the excess of premiums paid over benefits received.
- **Combination or hybrid** policies are a combination of life and LTC insurance. Several varieties of these combinations exist.

(1) Source: Wikipedia

ASSISTED LIVING WAIVER

The Assisted Living Waiver (ALW) is a Home and Community-Based Services (HCBS) waiver that was created by legislation that directed the California Department of Health Care Services (DHCS) to develop and implement the project to test the efficacy of assisted living as a Medi-Cal benefit.

The pilot program was determined to be successful during the first three years in a limited trial in three counties. In March 2009, the Centers for Medicare and Medicaid Services approved a waiver renewal for an additional five years and expansion of the program into additional counties. A five-year waiver renewal was effective March 1, 2014.

To be eligible to receive services as an ALW Participant, an individual must meet all of the following ALW eligibility criteria:

- Age 21 or older;
- Have full-scope Medi-Cal eligibility with zero share of cost;
- Have care needs equal to those of Medi-Cal-funded residents living and receiving care in Nursing Facilities;
- Willing to live in an assisted living setting as an alternative to a Nursing Facility;
- Able to reside safely in an assisted living facility or public subsidized housing;
- Willing to live in an assisted living setting located in one of the following counties providing ALW services: **Alameda, Contra Costa, Fresno, Kern, Los Angeles, Orange, Riverside, Sacramento, San**

Bernardino, San Diego, San Francisco, San Joaquin, San Mateo, Santa Clara, and Sonoma counties.

The goal of the ALW is to:

1. facilitate a safe and timely transition of Medi-Cal eligible seniors and persons with disabilities from a nursing facility to a community home-like setting in a Residential Care Facility (RCF), an Adult Residential Care Facility (ARF), or public subsidized housing, utilizing ALW services; and
2. offer eligible seniors and persons with disabilities, who reside in the community, but are at risk of being institutionalized, the option of utilizing ALW services to develop a program that will safely meet his/her care needs while continuing to reside in a RCF, ARF, or public subsidized housing.

For more information, please visit the California Department of Health Care Services at:
www.dhcs.ca.gov/services/ltc

GOVERNMENT AGENCIES

STATE

California Department of Aging
<https://www.aging.ca.gov/>
(916) 419 - 7500

California Department of Social Services
<http://www.cdss.ca.gov/>
(916) 651 - 8848

California Department of Public Health
<https://www.cdph.ca.gov/>
(916) 558-1784

COUNTY

Workforce Development, Aging & Community Services
<https://wdacs.lacounty.gov/>
(800) 510 - 2020

CITY

City of Los Angeles Department of Aging
<http://aging.lacity.org>
(213) 482 - 7252

OTHER RESOURCES

Websites that provide senior care information include:

www.agingcare.com
www.alzheimers.net
www.aplaceformom.com
www.assistedliving.com
www.caring.com
www.communityresourcefinder.com
www.eldercare.gov

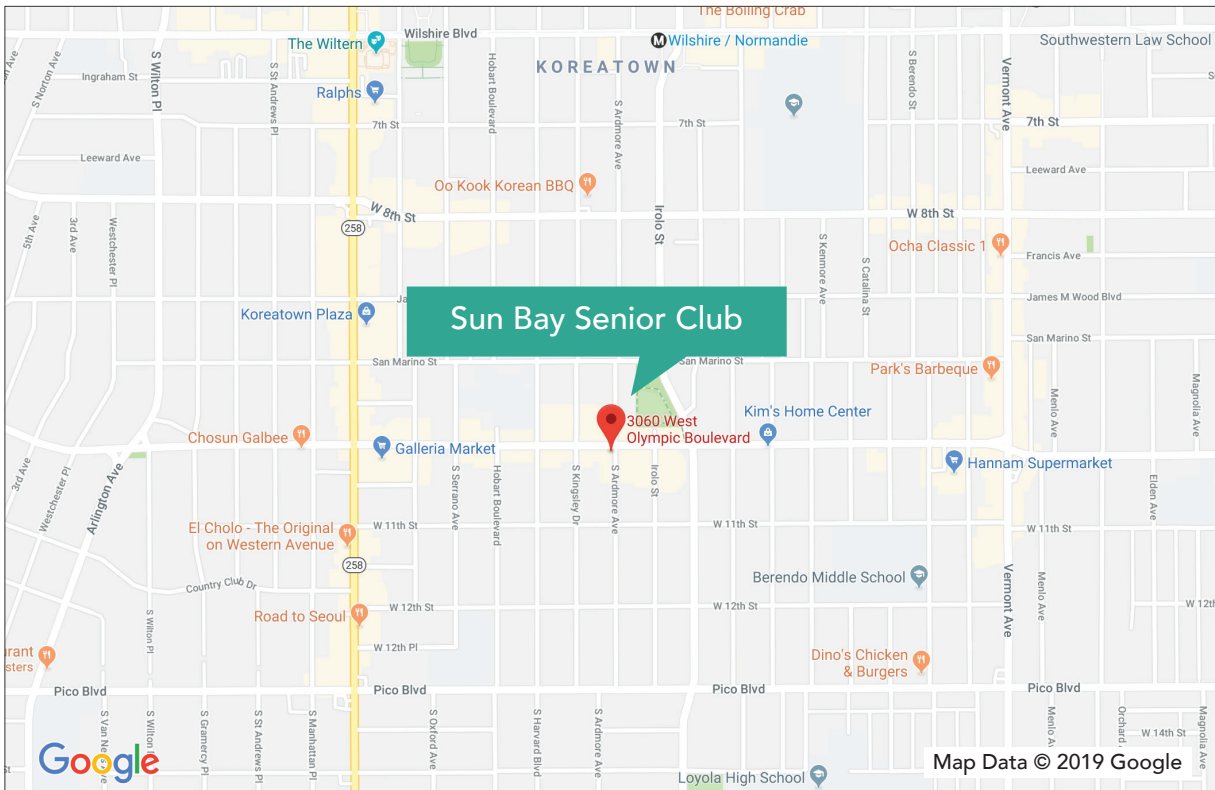
www.newlifestyles.com
www.ourparents.com
www.senioradvisor.com
www.seniorhomes.com
www.seniorly.com
www.seniorresource.com

II



SENIOR CARE DIRECTORY

ADULT DAY PROGRAMS



SUN BAY SENIOR CLUB

SUN BAY 시니어 클럽

BASIC INFORMATION

3060 W. Olympic Blvd #120
Los Angeles, CA 90006
213-349-2502
sunbayseniors.com

Operating Hours:
Mon - Fri 8:00 AM - 6:00 PM


OWNERSHIP

Owner Name: Sun Bay Koreatown, LLC
Ownership Date: 5/8/17
Type: For-Profit Corporation

SERVICES

Activities (Cognitive, Physical, Social)
Meals
Medication Reminders
Incontinence Care
Meal Monitoring





Sun Bay 시니어 클럽...

시니어들을 위한 새로운 옵션

한인타운 최초 프리미엄올데이 시니어 클럽



올 데이 안전과 편안함

월요일부터 금요일까지 오전 8시부터 오후 6시까지 숙련된 직원들로 운영되는 새로운 스타일의 럭셔리 시니어 클럽입니다.



친구같은 커뮤니티

시니어 클럽 멤버가 되시면 회원들 간의 친목을 유지하실 수 있습니다. 저희 직원들은 다양한 그룹 활동을 제안하고, 모든 구성원이 가족과 같은 편안함을 누리는 환경을 제공합니다.



특화된 프로그램

회원들은 댄싱, 원예, 소셜 미디어 클래스들과 수업들을 비롯하여 신체적, 사회적, 인지적 능력을 향상시키는 다양한 액티비티를 즐기실 수 있습니다.



식사 포함

많은 시니어들의 삶에 있어서 건강하고 균형잡힌 식단은 매우 중요한 요소입니다. 저희는 영양을 골고루 섭취할 수 있도록 균형있게 짜여진 다양한 식사를 제공합니다.

SUN BAY
— SENIOR CLUB —

3060 W Olympic Blvd, Suite 120,
Los Angeles, CA 90006

투어를 원하시면 213-349-2502로
연락 주세요!

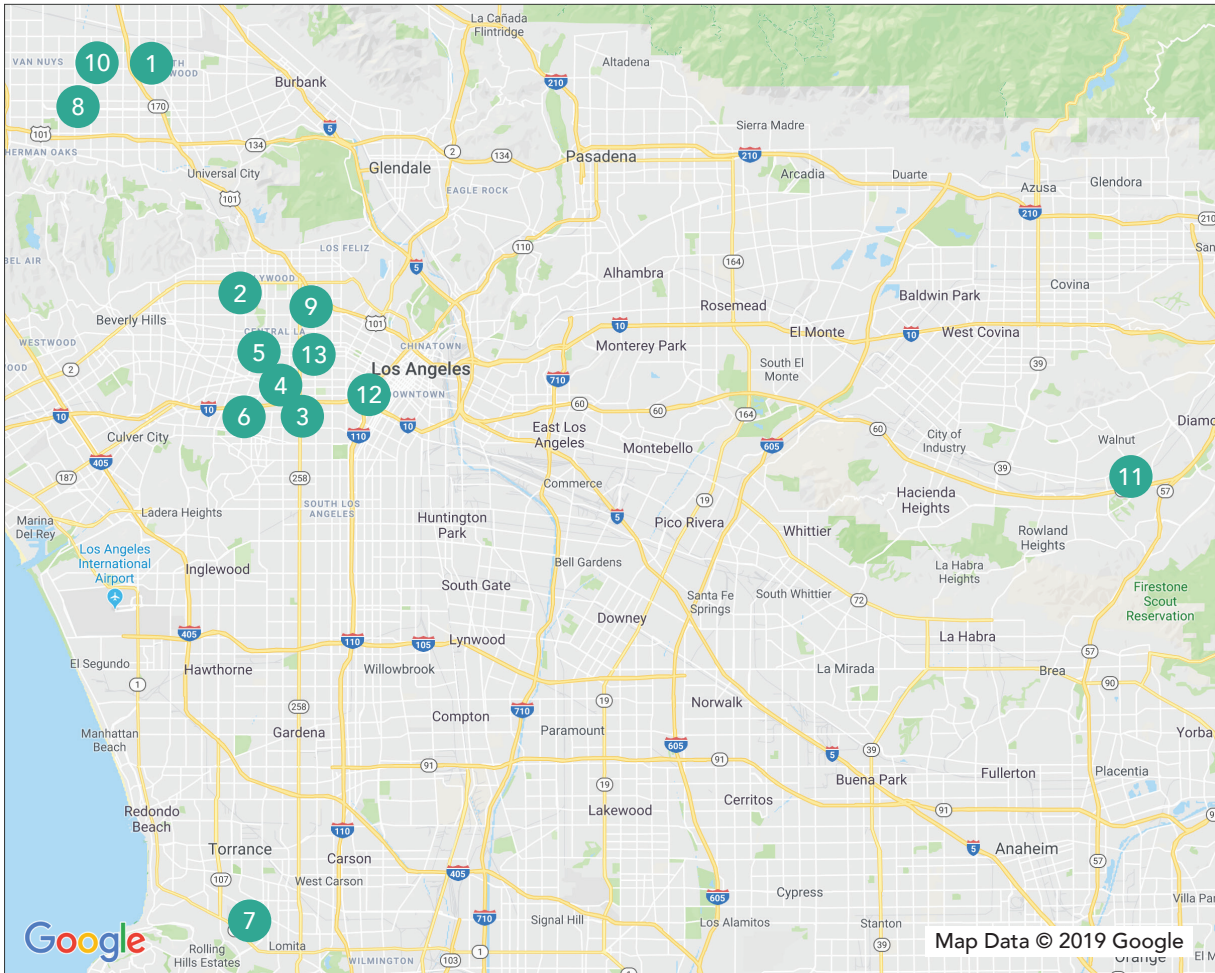
kr.sunbayseniors.com을 방문하시면
더 많은 정보를 보실 수 있습니다.



맞춤형 케어

맞춤형 케어를 통해 투약 알림, 식사 모니터링, 배변 보조 등의 서비스를 추가로 받으실 수 있습니다.

COMMUNITY BASED ADULT SERVICES



- | | |
|-------------------------------|----------------------------|
| 1. Better Life ADHC Center | 8. Pacific ADHC Center |
| 2. Beverly ADHC Center | 9. Silver Lake ADHC Center |
| 3. Day Light ADHC Center | 10. Sherman Way ADHC |
| 4. KHEIR ADHC | 11. Spring ADHC |
| 5. Kingsley Place ADHC Center | 12. Western ADHC |
| 6. LA CBAS Center | 13. Wilshire ADHC |
| 7. Lomita Center | |

BETTER LIFE ADULT DAY HEALTH CARE CENTER

밸리 보건센터

BASIC INFORMATION

13550 Sherman Way
Van Nuys, CA 91405
818-780-3900

Operating Hours:
Mon - Fri 8:00 AM - 2:00 PM

5 YEAR STATE RECORDS

<http://www.calqualitycare.org>

Deficiencies: 15

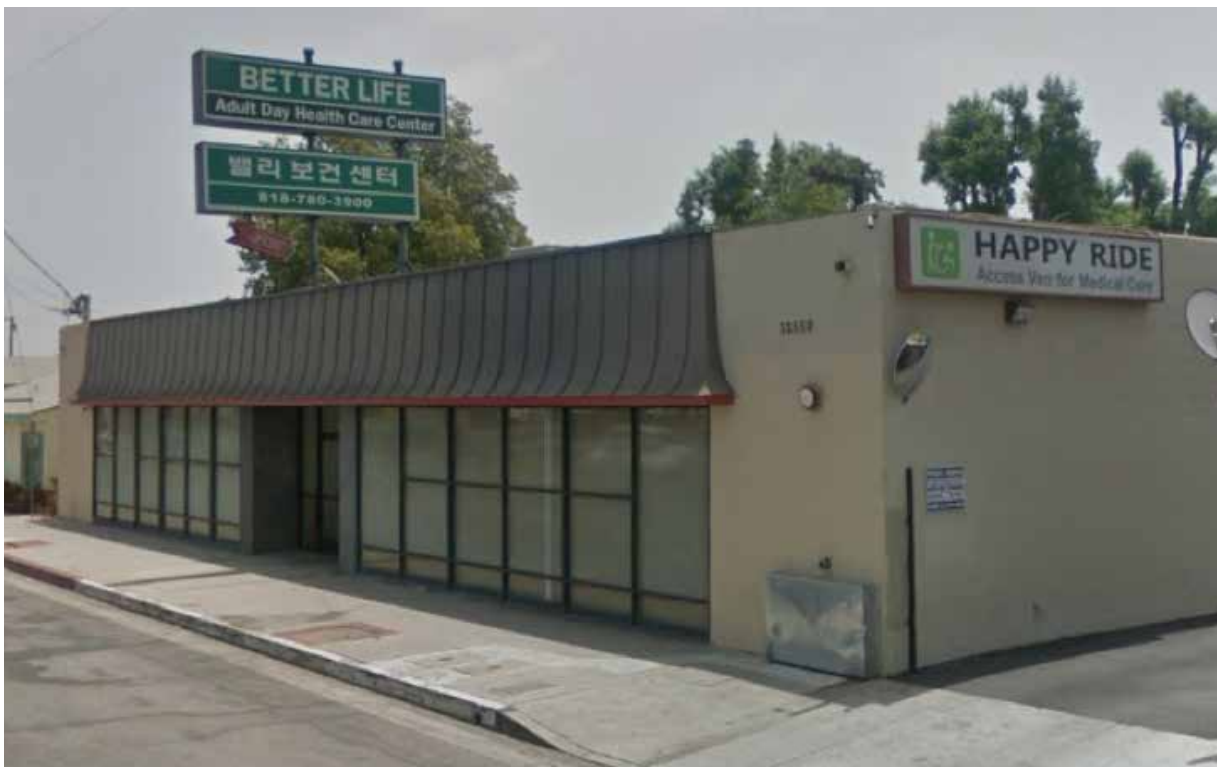
Complaints: 0

OWNERSHIP

Owner Name: Better Life Adult Day Health Center, Inc.

Ownership Date: 12/19/02

Type: For-Profit Corporation



BEVERLY ADULT DAY HEALTH CARE CENTER

베버리 보건센터

BASIC INFORMATION

316 North Western Avenue
Los Angeles, CA 90004
323-957-9777

Operating Hours:
Mon - Fri 8:00 AM - 1:30 PM

5 YEAR STATE RECORDS

<http://www.calqualitycare.org>

Deficiencies: 0

Complaints: 0

OWNERSHIP

Owner Name: Beverly Adult Day Health Care, Inc.

Ownership Date: 1/14/04

Type: Non-Profit



DAY LIGHT ADULT DAY HEALTH CARE CENTER

데이라이트-피코양로 보건센터

BASIC INFORMATION

2367 W Pico Blvd
Los Angeles, CA 90006
213-736-2277

Operating Hours:
Mon - Fri 7:30 AM - 1:30 PM

5 YEAR STATE RECORDS

<http://www.calqualitycare.org>

Deficiencies: 0

Complaints: 0

OWNERSHIP

Owner Name: Daylight Adult Day Health Care, Inc.

Ownership Date: 8/15/01

Type: Non-Profit



KHEIR ADULT DAY HEALTH CARE

한인건강정보부속양로 보건센터

BASIC INFORMATION

3030 West 8th Street
Los Angeles, CA 90005
213-427-4000

Operating Hours:
Mon - Fri 8:00 AM - 4:00 PM

<http://www.lakheir.org/adultdaycare.html>

5 YEAR STATE RECORDS

<http://www.calqualitycare.org>

Deficiencies: 0

Complaints: 0

OWNERSHIP

Owner Name: Korean Health, Education, Information and Research Center

Ownership Date: 5/2/96

Type: Non-Profit



KINGSLEY PLACE ADULT DAY HEALTH CARE

킹슬리양로 보건센터

BASIC INFORMATION

548 S. Kingsley Dr.
Los Angeles, CA 90020
213-383-3303

Operating Hours:
Mon - Fri 8:00 AM - 2:00 PM

5 YEAR STATE RECORDS

<http://www.calqualitycare.org>

Deficiencies: 0

Complaints: 0

OWNERSHIP

Owner Name: Kingsley Place Adult Day Health Care

Ownership Date: 8/16/01

Type: For-Profit Corporation



LA CBAS CENTER

나성양로 보건센터

BASIC INFORMATION

2666 W. Pico Blvd
Los Angeles, CA 90006
213-384-3224

Operating Hours:
Mon - Fri 8:00 AM - 2:00 PM

5 YEAR STATE RECORDS

<http://www.calqualitycare.org>

Deficiencies: 13

Complaints: 0

OWNERSHIP

Owner Name: LHP Adult Day Care Center, Inc.

Ownership Date: 6/30/00

Type: For-Profit Corporation



LOMITA ADULT DAY HEALTH CARE CENTER

로미타양로보건센터

BASIC INFORMATION

1234 W Lomita Blvd #E
Harbor City, CA 90710
310-539-4800

Operating Hours:
Mon - Fri 8:00 AM - 1:30 PM

5 YEAR STATE RECORDS

<http://www.calqualitycare.org>

Deficiencies: 0

Complaints: 0

OWNERSHIP

Owner Name: Lomita Health Management, Inc.

Ownership Date: 2/25/03

Type: For-Profit Corporation



PACIFIC ADULT DAY HEALTH CARE

퍼시픽양로보건센터

BASIC INFORMATION

5562 Reseda Blvd
Tarzana, CA 91356
818-776-8700

Operating Hours:
Mon - Fri 9:00 AM - 1:00 PM

5 YEAR STATE RECORDS

<http://www.calqualitycare.org>

Deficiencies: 0

Complaints: 0

OWNERSHIP

Owner Name: Pacific ADHC, Inc.
Ownership Date: 6/28/01
Type: For-Profit Corporation



SILVER LAKE ADULT DAY HEALTH CARE

실버레이크 보건센터

BASIC INFORMATION

3339 W Temple St
Los Angeles, CA 90026
213-383-0050

Operating Hours:
Mon - Fri 8:00 AM - 1:30 PM

5 YEAR STATE RECORDS

<http://www.calqualitycare.org>

Deficiencies: 0

Complaints: 0

OWNERSHIP

Owner Name: JHK Heritage, Inc.
Ownership Date: 9/4/03
Type: For-Profit Corporation



SHERMAN WAY ADULT DAY HEALTH CARE

셔먼웨이양로 보건센터

BASIC INFORMATION

18301 Sherman Way
Reseda, CA 91335
818-654-0123

Operating Hours:
Mon - Fri 8:00 AM - 1:30 PM

5 YEAR STATE RECORDS

<http://www.calqualitycare.org>

Deficiencies: 1

Complaints: 1

OWNERSHIP

Owner Name: Sherman Way Adult Day Health Care Center, Inc.

Ownership Date: 5/20/03

Type: For-Profit Corporation



SPRING ADULT DAY HEALTH CARE

스프링 보건센터

BASIC INFORMATION

19648 Camino De Rosa
Walnut, CA 91789
626-965-7833

Operating Hours:
Mon - Fri 8:30 AM - 2:30 PM

5 YEAR STATE RECORDS

<http://www.calqualitycare.org>

Deficiencies: 0

Complaints: 0

OWNERSHIP

Owner Name: Spring Adult Day Health Care, Inc.

Ownership Date: 6/30/04

Type: For-Profit Corporation



WESTERN ADULT DAY HEALTH CARE

웨스턴양로보건센터

BASIC INFORMATION

2001 W Olympic Blvd
Los Angeles, CA 90006
213-736-0001

<http://www.westernadhc.org/>

Operating Hours:
Mon - Fri 8:30 AM - 1:00 PM

5 YEAR STATE RECORDS

<http://www.calqualitycare.org>

Deficiencies: 4

Complaints: 0

OWNERSHIP

Owner Name: Hanmaeum Senior Services, Inc.

Ownership Date: 2/8/99

Type: For-Profit Corporation



WILSHIRE ADULT DAY HEALTH CARE

월서양로보건센터

BASIC INFORMATION

3020 Wilshire Blvd #150
Los Angeles, CA 90010
213-383-0900

Operating Hours:
Mon - Fri 8:30 AM - 2:30 PM

5 YEAR STATE RECORDS

<http://www.calqualitycare.org>

Deficiencies: 0

Complaints: 0

OWNERSHIP

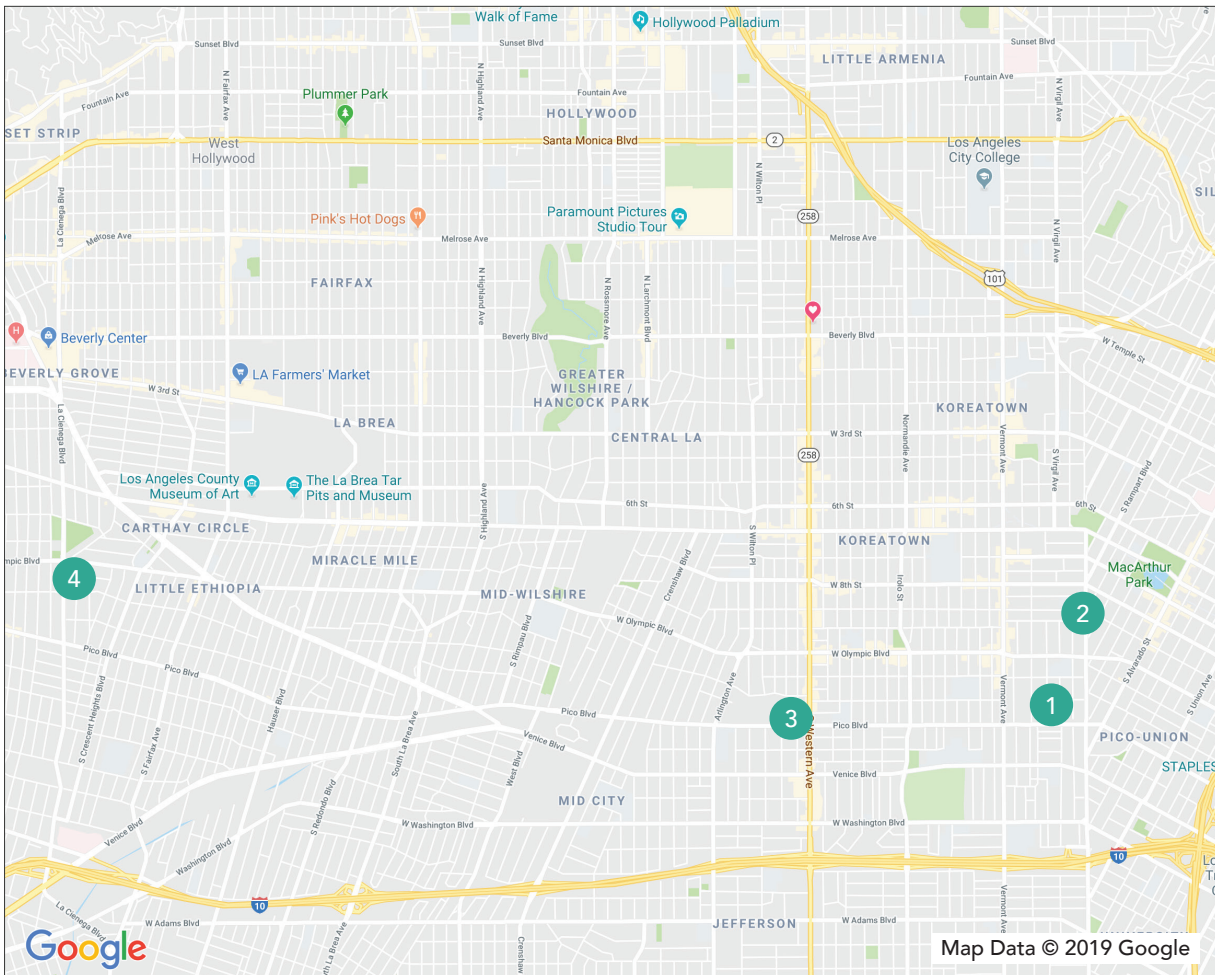
Owner Name: Sorores, Inc.

Ownership Date: 5/9/03

Type: For-Profit Corporation



ASSISTED LIVING



1. Elim Silvertown
2. Garden Silver Town
3. Mugungwha Silver Town
4. Sunny Hills Assisted Living

ELIM SILVERTOWN

엘림실버타운

BASIC INFORMATION

1126 S Westmoreland Avenue

Los Angeles, CA 90006

213-736-7777

www.elimsilvertown.com

CA DEPARTMENT OF SOCIAL SERVICES INFORMATION

<http://secure.dss.ca.gov/CareFacilitySearch/>

Licensee: Elim Healthcare, Inc

Facility Type: Residential Care Elderly

Total Bed Capacity: 142



GARDEN SILVER TOWN

가든실버타운

BASIC INFORMATION

2830 Francis Avenue
Los Angeles, CA 90005
213-384-7305

CA DEPARTMENT OF SOCIAL SERVICES INFORMATION

<http://secure.dss.ca.gov/CareFacilitySearch/>

Licensee: Welcome Care Corporation

Facility Type: Residential Care Elderly

Total Bed Capacity: 72



MUGUNGWHA SILVER TOWN

무궁화실버타운

BASIC INFORMATION

1423 S Manhattan Pl
Los Angeles, CA 90019
323-373-1988

CA DEPARTMENT OF SOCIAL SERVICES INFORMATION

<http://secure.dss.ca.gov/CareFacilitySearch/>

Licensee: S. M. Healthcare, Inc.
Facility Type: Residential Care Elderly
Total Bed Capacity: 56



SUNNY HILLS ASSISTED LIVING

써니힐스양로호텔

BASIC INFORMATION

8717 West Olympic Blvd
Los Angeles, CA 90035
310-659-4301

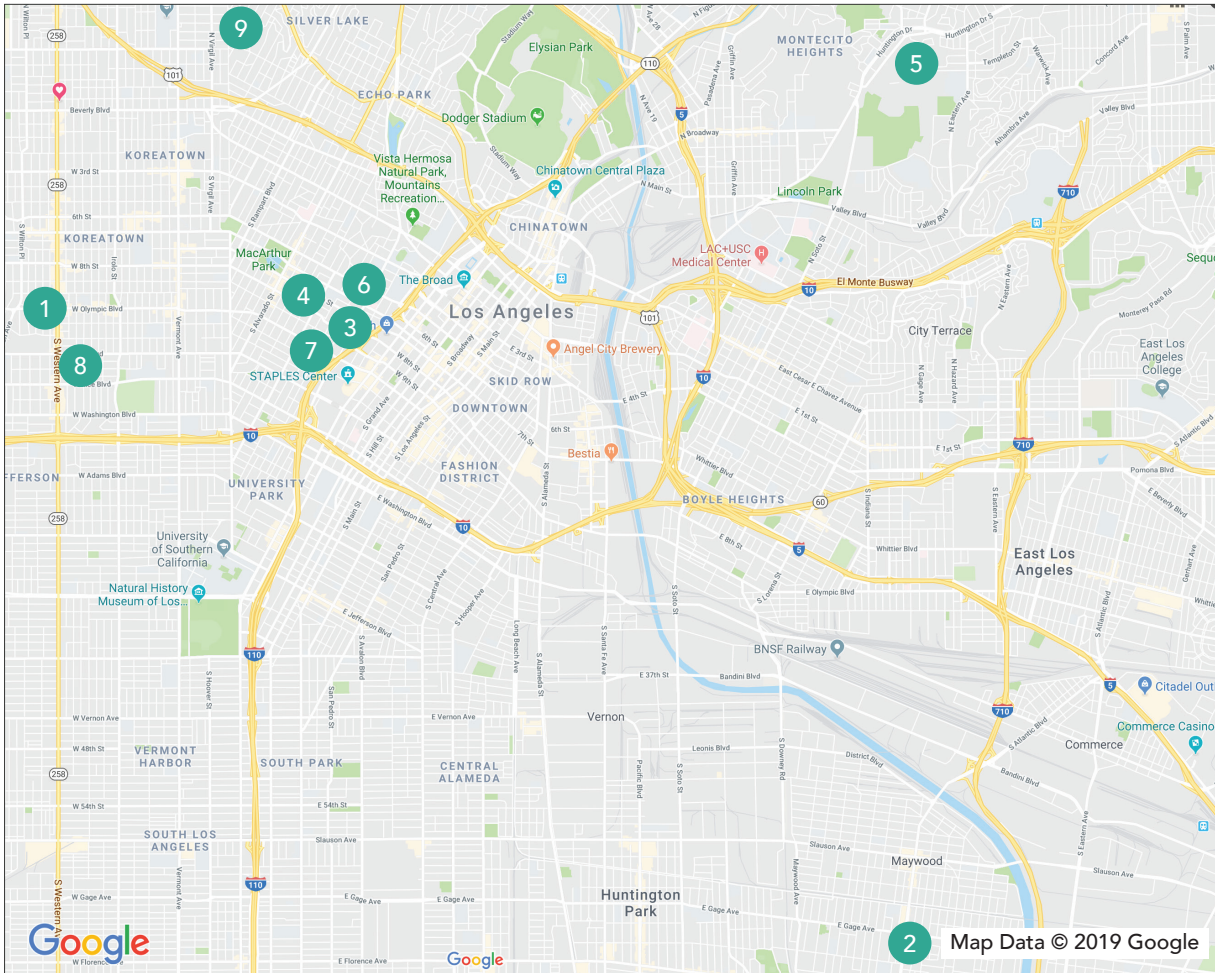
CA DEPARTMENT OF SOCIAL SERVICES INFORMATION

<http://secure.dss.ca.gov/CareFacilitySearch/>

Licensee: Spark Family Operation, LLC
Facility Type: Residential Care Elderly
Total Bed Capacity: 120



SKILLED NURSING



1. Alcott Rehabilitation Hospital
2. Bell Convalescent Hospital
3. Burlington Convalescent Hospital
4. Grand Park Convalescent Hospital
5. Huntington Health Care Center

6. Mid-Wilshire Health Care Center
7. Olympia Convalescent Hospital
8. Sunray Healthcare Center
9. Virgil Convalescent Hospital

ALCOTT REHABILITATION HOSPITAL

알콧양로병원

BASIC INFORMATION

3551 W Olympic Blvd
Los Angeles, CA 90019
323-734-2000
www.alcotrehabilitation.com

MEDICARE.GOV RATINGS

Overall: 5
Health Inspection: 4
Staffing: 3
Quality Measures: 5

CA DEPARTMENT OF PUBLIC HEALTH INFORMATION

<http://hfcis.cdph.ca.gov/search.aspx>

Licensee:	Inland Medical Enterprises, Inc.	License Type:	Profit Corp.
	3551 W Olympic Blvd	Total Bed Capacity:	121
	Los Angeles, CA 90019	Classification:	Skilled Nursing
		Other Approved Services:	Physical Therapy

	2017	2016	2015	2014	2013
Complaints	0	0	3	1	0
Facility Self-Reported Incidents	2	2	3	2	4
State Enforcement Actions	0	0	0	0	0
Survey Deficiencies	7	17	0	0	6



BELL CONVALESCENT HOSPITAL

벨양로병원

BASIC INFORMATION

4900 E. Florence Ave
Bell, CA 90201
323-560-2045

MEDICARE.GOV RATINGS

Overall: 2
Health Inspection: 1
Staffing: 1
Quality Measures: 5

CA DEPARTMENT OF PUBLIC HEALTH INFORMATION

<http://hfcis.cdph.ca.gov/search.aspx>

Licensee: P & J Hospital, Inc.
4900 E. Florence Avenue
Bell, CA 90201

License Type: Profit Corp.
Total Bed Capacity: 99
Classification: Skilled Nursing

	2017	2016	2015	2014	2013
Complaints	6	9	18	3	1
Facility Self-Reported Incidents	1	2	3	0	2
State Enforcement Actions	1	3	1	0	0
Survey Deficiencies	23	20	20	1	11



BURLINGTON CONVALESCENT HOSPITAL

벌링턴양로병원

BASIC INFORMATION

845 S. Burlington Avenue
Los Angeles, CA 90057
213-381-5585

MEDICARE.GOV RATINGS

Overall: 4
Health Inspection: 3
Staffing: 3
Quality Measures: 5

CA DEPARTMENT OF PUBLIC HEALTH INFORMATION

<http://hfcis.cdph.ca.gov/search.aspx>

Licensee: Burlington Convalescent
Hospital, Inc.
845 S. Burlington Avenue
Los Angeles, CA 90057

License Type: Profit Corp.
Total Bed Capacity: 124
Classification: Skilled Nursing

	2017	2016	2015	2014	2013
Complaints	30	35	11	5	9
Facility Self-Reported Incidents	15	23	10	2	1
State Enforcement Actions	0	0	0	0	0
Survey Deficiencies	14	16	29	28	6



GRAND PARK CONVALESCENT HOSPITAL

그랜드박양로병원

BASIC INFORMATION

2312 W 8th St
Los Angeles, CA 90057
213-382-7315

MEDICARE.GOV RATINGS

Overall: 3
Health Inspection: 2
Staffing: 3
Quality Measures: 5

CA DEPARTMENT OF PUBLIC HEALTH INFORMATION

<http://hfcis.cdph.ca.gov/search.aspx>

Licensee: Care for the Elderly, Inc.
2312 W 8th Street
Los Angeles, CA 90057

License Type: Profit Corp.
Total Bed Capacity: 151
Classification: Skilled Nursing

	2017	2016	2015	2014	2013
Complaints	3	2	1	2	2
Facility Self-Reported Incidents	0	0	2	0	0
State Enforcement Actions	0	0	0	0	1
Survey Deficiencies	1	15	13	16	28



HUNTINGTON HEALTH CARE CENTER

헌팅턴양로병원

BASIC INFORMATION

4515 Huntington Drive South
Los Angeles, CA 90032
323-225-5991

MEDICARE.GOV RATINGS

Overall: 2
Health Inspection: 1
Staffing: 1
Quality Measures: 5

CA DEPARTMENT OF PUBLIC HEALTH INFORMATION

<http://hfcis.cdph.ca.gov/search.aspx>

Licensee:	LA Huntington Healthcare LLC	License Type:	Profit Corp.
	250 Fairview Road	Total Bed Capacity:	99
	Thousand Oaks, CA 91361	Classification:	Skilled Nursing

	2017	2016	2015	2014	2013
Complaints	20	13	6	1	8
Facility Self-Reported Incidents	1	5	0	2	0
State Enforcement Actions	1	1	0	1	0
Survey Deficiencies	36	47	14	1	14



MID-WILSHIRE HEALTH CARE CENTER

중앙양로병원

BASIC INFORMATION

676 S. Bonnie Brae St.
Los Angeles, CA 90057
213-483-9921

MEDICARE.GOV RATINGS

Overall: 5
Health Inspection: 4
Staffing: 4
Quality Measures: 5

CA DEPARTMENT OF PUBLIC HEALTH INFORMATION

<http://hfcis.cdph.ca.gov/search.aspx>

Licensee: Best Health Services, LLC
676 S. Bonnie Brae St.
Los Angeles, CA 90057

License Type: Limited Liability Co.
Total Bed Capacity: 80
Classification: Skilled Nursing

	2017	2016	2015	2014	2013
Complaints	0	0	35	2	2
Facility Self-Reported Incidents	7	1	2	1	7
State Enforcement Actions	0	0	0	0	2
Survey Deficiencies	11	6	11	2	11



OLYMPIA CONVALESCENT HOSPITAL

올림피아양로병원

BASIC INFORMATION

1100 S Alvarado St
Los Angeles, CA 90006
213-487-3000

MEDICARE.GOV RATINGS

Overall: 2
Health Inspection: 1
Staffing: 4
Quality Measures: 5

CA DEPARTMENT OF PUBLIC HEALTH INFORMATION

<http://hfcis.cdph.ca.gov/search.aspx>

Licensee: 1100 South Alvarado
Street, LLC
13347 Ventura Blvd
Sherman Oaks, CA 91423

License Type: Limited Liability Co.
Total Bed Capacity: 135
Classification: Skilled Nursing

	2017	2016	2015	2014	2013
Complaints	0	0	6	0	2
Facility Self-Reported Incidents	6	1	2	1	3
State Enforcement Actions	5	0	0	0	0
Survey Deficiencies	4	14	12	15	11



SUNRAY HEALTHCARE CENTER

썬레이 양로병원

BASIC INFORMATION

3210 W Pico Blvd
Los Angeles, CA 90019
323-734-2171
<http://sunrayhc.com/>

MEDICARE.GOV RATINGS

Overall: 4
Health Inspection: 3
Staffing: 3
Quality Measures: 5

CA DEPARTMENT OF PUBLIC HEALTH INFORMATION

<http://hfcis.cdph.ca.gov/search.aspx>

Licensee: KF Sunray, LLC
1438 S. Euclid Avenue
Anaheim, CA 92802

License Type: Limited Liability Co.
Total Bed Capacity: 99
Classification: Skilled Nursing

	2017	2016	2015	2014	2013
Complaints	14	2	12	4	2
Facility Self-Reported Incidents	8	10	4	1	1
State Enforcement Actions	0	0	0	0	1
Survey Deficiencies	9	21	14	10	2



VIRGIL CONVALESCENT HOSPITAL

버질양로병원

BASIC INFORMATION

975 N Virgil Ave
Los Angeles, CA 90029
323-665-5793

MEDICARE.GOV RATINGS

Overall: 4
Health Inspection: 3
Staffing: 3
Quality Measures: 5

CA DEPARTMENT OF PUBLIC HEALTH INFORMATION

<http://hfcis.cdph.ca.gov/search.aspx>

Licensee:	Advanced Skilled Nursing, Inc.	License Type:	Profit Corp.
	4221 Hampstead Road	Total Bed Capacity:	124
	La Cañada, CA 91011	Classification:	Skilled Nursing

	2017	2016	2015	2014	2013
Complaints	9	2	8	2	5
Facility Self-Reported Incidents	2	1	0	0	1
State Enforcement Actions	0	0	1	0	0
Survey Deficiencies	1	22	11	0	18



ORGANIZATIONS

The following organizations address the needs of seniors with Korean heritage:

US Korean Senior Welfare Association

3242 W 8th Street
Los Angeles, CA 90005
213-381-1244

Korean Senior Citizen Mutual Club

3807 Wilshire Blvd, Suite 406
Los Angeles, CA 90010
213-738-9988

Korean Senior Citizen Mutual Club

965 S Normandie Ave
Los Angeles, CA 90006
213-738-9988

South Bay Korean American Senior Citizen Association

1047 W 164th Street
Gardena, CA 90247
310-532-0955

Korean Senior Citizen Association of San Fernando Valley

18531 Gresham St
Northridge, CA 91324
818-700-0044

Senior Citizens Association

420 Ord St, Suite 202
Los Angeles, CA 90012
213-628-8461

Keum Ran Senior Citizen's Association, Inc.

2836 W 8th St, Suite 108
Los Angeles, CA 90005
213-387-1122

Angelus Plaza Korean Association

255 Hill St
Los Angeles, CA 90012
213-626-2882

Sukryu Senior Korean Dance Studio

3807 Wilshire Blvd, Suite B5
Los Angeles, CA 90010
213-427-0525

Korean-American Seniors Association of Orange County

9884 Garden Grove Blvd
Garden Grove, CA 92844
714-530-6705

Korean American Senior Co-Operation Center

1831 Colima Rd
Rowland Heights, CA 91748
626-965-9990

ACKNOWLEDGEMENTS

We would like to acknowledge the following people who helped produce the Korean Senior Care Resource Guide on behalf of the Korean American Health Coalition:

Ashlee Oh

David Seil Kim, MD, PhD, MBA

Eric Ji

Gloria Choi

Henry Choi

Julie Kim

Karen Cho

Kimmy Moon